

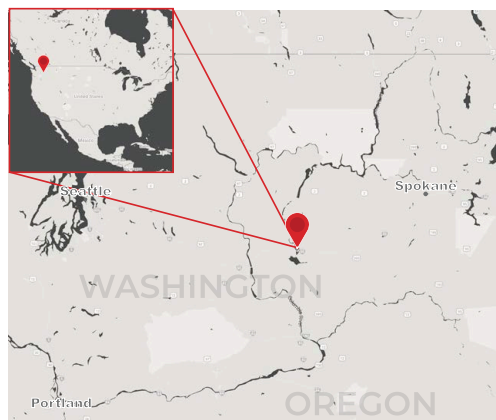
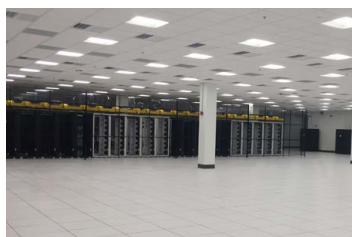
Moses Lake

SF TITAN



Highly efficient data center engineered and built to TEMPEST military specifications to withstand a 10-megaton blast within a quarter mile.

Capacity		Capabilities	
Utility	34MVA	Portal	Ticketing, data, & analytics
IT	22MW	Hands	Smart & Remote
Building 1	163,000 sq ft	ITSM	InCommand®
Building 2	250,000 sq ft	Security	24/7 staff, CCTV
Halls	Up to 16	Features	Extremely low cost of power
Density	200 W/sq ft		Green, ample, and reliable power
Cooling	Hybrid air handling units with indirect airside economizers		Significant expansion options
PUE	1.25		Low future price escalations
			Bombproof within a quarter mile
Connectivity		Certifications	
Telcos	9	HIPAA COMPLIANT	SSAE 16 CERTIFIED
MMRs	4		PCI DSS COMPLIANT
Cloud	AWS, Azure, GCP		NVIDIA DGX-Ready
Carriers	CenturyLink, Level 3, Zayo, AT&T, T-Mobile, NOA NET, LocalTel, Northland Cable, Grant County PUD Dark Fiber	(SOC2 / Type 1+2)	



SF TITAN

This unique data center was a command center for the US Titan missile defense program, and was designed to withstand a 10 Megaton detonation a quarter of a mile away. Ideal location for web-scale and disaster recovery platforms with low risk of natural disaster, high desert climate, and it also has low-cost renewable power, with nearly 100% of its needs supplied by hydroelectric dams on the nearby Columbia River.

Our InCommand Services offer a range of fully managed Facility and IT infrastructure management solutions, as well as real-time access to data center analytics.